

PICKIT
Mobile Picture Kit

Quick Start Guide

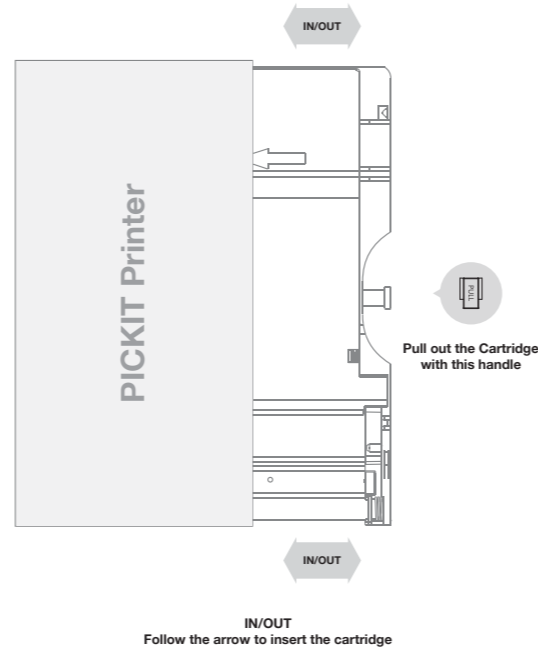


The N-Mark is a trademark or registered trademark of NFC Forum, Inc. in the United States and in other countries



Copyright©2015 Prinics Co.,Ltd. All rights reserved. www.prinics.com

Step 1 Before Start



Step 2 App Installation

1. Android Device

A TYPE * NFC Support Android Device ONLY

- 1) Turn NFC on in your smart phone.
- 2) Tap the phone on the top of Pickit printer. Google Play Store app installation page will show up.
- 3) Install the app into your smartphone from the store.

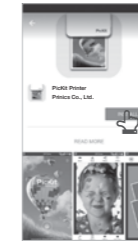


A TYPE

B TYPE

- 1) Go to Google Play Store in your smartphone.
- 2) Search "Pickit Printer"
- 3) Install "Pickit Printer" into your smartphone.

Step 2 App Installation



B TYPE

2. Apple Device

- 1) Go to Appstore in your iPhone, iPod touch or iPad.
- 2) Search "Pickit Printer"
- 3) Install "Pickit Printer" Application into your device.



Step 3 Connecting to the PicKit

1. WiFi Access Point (AP) *Apple and Android Devices.

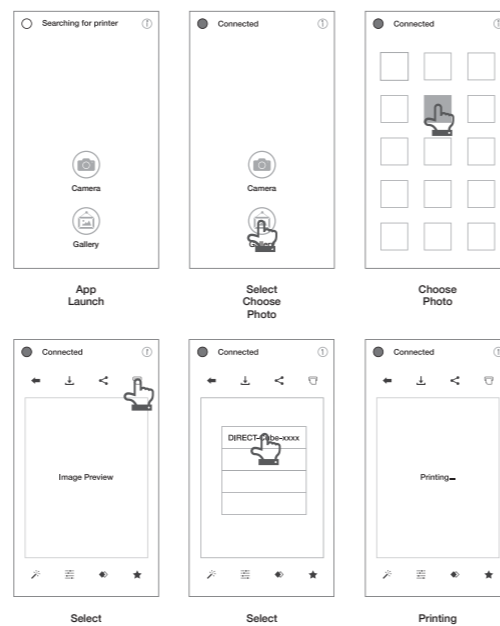
- 1) Turn WiFi on in your smartphone.
- 2) Go to WiFi setting and find "Direct-Cube-XXXX".
* Printer names are vary and 4 digits. The 4 digits are combination of number and alphabet.
- 3) Password is "12345678".
- 4) Select the WiFi network to connect the printer.

2. NFC and WiFi Direct * NFC, WiFi Direct support devices ONLY

- 1) Turn NFC and WiFi on in your smartphone.
* Set the NFC setting as P2P mode.
- 2) Tap your device on the center of the printer where the NFC mark is.
- 3) Within 20 seconds, the app will automatically connect to WiFi Direct
- 4) When the printer is connected to WiFi Direct, green mark will be shown in the app.



Step 4 Printing in the App



* In case of multiple printers are available

Step 5 PicKit LED Indicator

Power and Active Status

Status	Indicator
Power ON (z)	White
Power OFF (zSec)	Off
Printing	White Flickering
F/W Upgrade	Pink Flickering
No Cartridge	Red Flickering
Error (Paper Jam, etc)	Red Flickering
Waiting / Cooling	White

Battery Status

Status	Indicator
Charging	Red
Charging Complete	Green
Low Battery	Red Flickering
Battery Empty	Red Flickering

Troubleshooting

Symptom	Cause / Solution
Paper Jam	Power off and Power On again. Paper will be automatically ejected. If not, please contact customer service.
Image quality is not good.	Print quality could be less if your photo source has low resolution. Over 1280 x 2448 pixel is recommended for best image quality.
Printer is not responding	Press Reset button with sharp tool like pin.

Step 6 Note & FCC

NOTE

- * Photo Paper will go in and out 4 times (YMCO, Yellow, Magenta, Cyan, Overcoating). Do NOT touch the paper during printing process for best image quality.
- * Do not pull paper out by force during printing.
- * Do not place an object in front of the paper exit slot.
- * Use the latest Pickit application for best print quality. Check the latest app version from Google Play Store and Apple Appstore.
- * Pickit Printer has Built-in Battery. Charge the printer before using.
- * Handle with care during charging to prevent electric shock.
- * Do not disassemble or deform.
- * Avoid too high or low temperature or humidity.
- * If NFC tag is not read, check its position on the printer and smartphone. Then try again.
- * The higher resolution the image has, the higher quality the printed photo has. Recommended image size is 1280 * 2448 pixel.
- * Operating Temperature : 0 ~ 40°C

FCC (Federal Communications Commission)

This device complies with part 15 of the FCC Rules. Operation is subject to the following two conditions:
(1) This device may not cause harmful interference, and
(2) This device must accept any interference received, including interference that may cause undesired operation.

Caution: Any changes or modifications to the equipment not expressly approved by the party responsible for compliance could void user's authority to operate the equipment.

This device (FCCID: PO5M1) complies with FCC SAR requirement.